



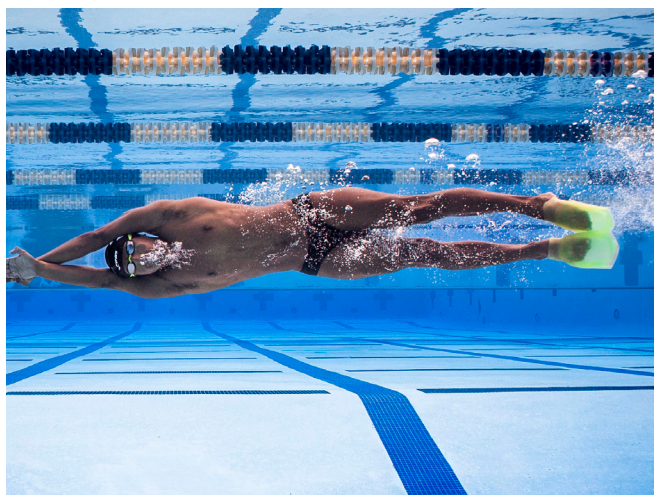
Deep Pink
[.179]



Marine Blue
[.189]



Volt Green
[.169]



Traditional fins are bulky, heavy, and uncomfortable. We created SlipFin Pro because swimmers need a comfortable, lightweight fin that supports good technique and allows for race-pace rhythm.

SlipFin Pro slips over the top of the foot creating a suction that holds the fin in place. The patented design is intended to act like a natural extension of your foot. With your ankles and heels completely free, you get unmatched comfort, flexibility and power.

Experience flow like never before, SlipFin Pro connects you to the water delivering smooth propulsion that reinforces the ideal bodyline and rhythm for every level of swimming.

HOW IT WORKS:

Wet the fin, slip it on, then squeeze out the air or water. The soft material creates a gentle vacuum effect so it stays put without straps.

MOVES WITH YOU:

Designed to move in harmony with your body, enhancing rhythm, balance, and connection with every kick.

FEATHERLIGHT RELIEF:

Fin power, minus the bulky weight that can leave ankles feeling beat up. Just light, comfortable speed that feels natural.

GENTLE LIFT, EFFORTLESS MOTION:

SlipFin Pro adds just the right amount of support, giving you a smoother, easier swim without overpowering your rhythm or straining your joints.

BAREFOOT FREEDOM:

One swim and you'll understand.

DIP. SLIP. SQUEEZE. SWIM.

1. **Dip** the fins and your feet in the water.
2. **Slip** the fins onto your feet.
3. **Squeeze** the top of the fin to release excess air and water.

Swim and experience flow like never before.

SIZES

Available in Small [.04], Medium [.05], and Large [.06].

Size Guide on Page 2 →

SLIPFIN PRO SIZE GUIDE

Sizing is based on your **instep measurement**, not your shoe size.



Measure the circumference of your instep:

1. Wrap a soft tape measure around the top of your foot, just in front of your ankle.
2. Keep the tape flat and snug.
3. Use this measurement to find your size in the chart below

No tape measure?

Use a shoelace or string, then measure it against a ruler.

SlipFin Pro Size	Instep Circumference (cm)	Foot Width
Small (S)	21 - 24.5 cm	Narrow
Medium (M)	23.5 - 27 cm	Regular
Large (L)	26 - 28+ cm	Wide

Fit Tip: If you fall between sizes:

- For a **snug, performance fit** → choose the **smaller size**.
- For a more **relaxed, comfort fit** → choose the **larger size**.
- **Narrow feet** → choose the **smaller size**.
- **Wide feet** → choose the **larger size**.