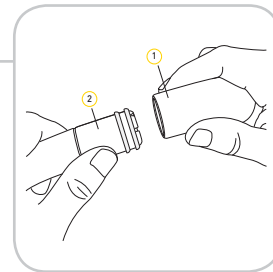


STABILITY SNORKEL: SPEED

FULL INSTRUCTIONS

FIT

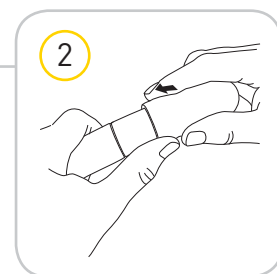
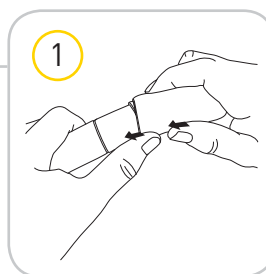
- The head rest should be curved against your forehead, and the mouthpiece should be comfortable without putting pressure on the roof of your mouth.
- You may need to try several settings before finding the right one.



- ① Mouthpiece
- ② Tube

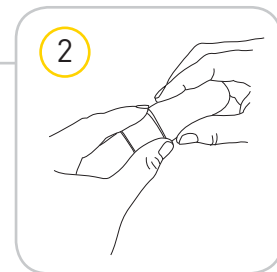
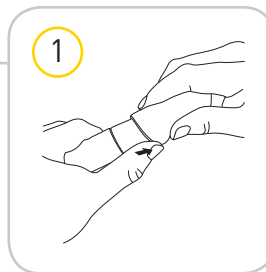
TO SHORTEN

1. Start at the bottom of the mouthpiece's grooves and push up with one thumb, while pulling in the same direction with your other thumb.
2. Move one groove (or setting) at a time.
3. Continue doing this motion around the mouthpiece until you reach your desired setting.



TO LENGTHEN

1. Start at the top of the mouthpiece's grooves and push down with one thumb, while pulling in the same direction with your other thumb.
2. Move one groove (or setting) at a time.
3. Continue doing this motion around the mouthpiece until you reach your desired setting.



CARE

- Rinse with fresh water after use.
- Store in a cool, dry environment.
- Do not place in direct sunlight to dry as this may cause damage.
- Read the instructions before adjusting the snorkel's tube length.
- Replaceable mouthpiece is available, contact the FINIS Customer Operations team for more details.



DESIGNED IN CALIFORNIA

USA 888.333.4647
EUROPE 359.2.936.86.36
WEB www.FINISswim.com

For all technical issues please contact FINIS:
www.FINISswim.com/support



| @FINISswim



| @FINISinc



| @FINISswim

FINIS, Inc.
©2019 FINIS, Inc. All rights reserved.
FINIS[®]